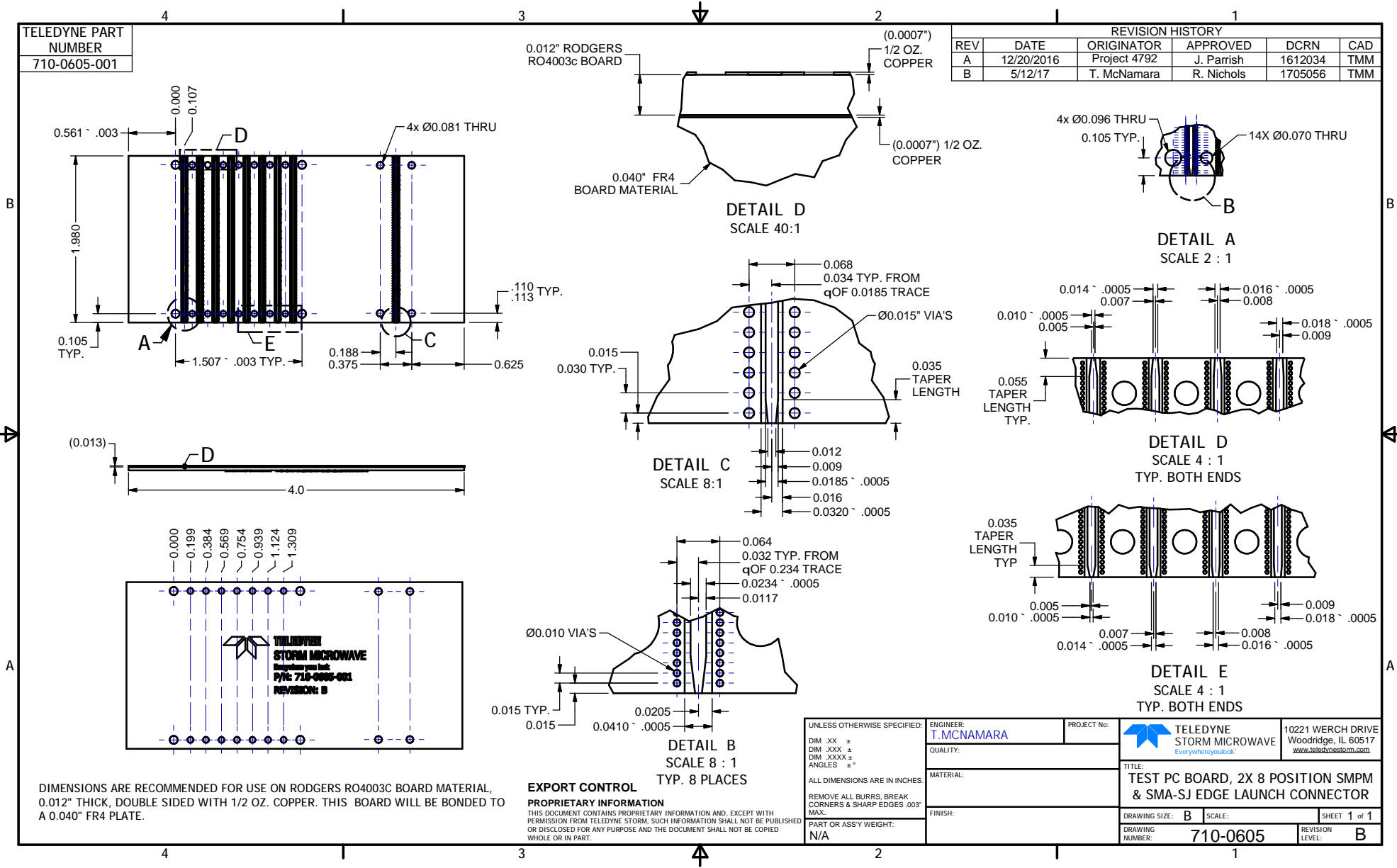


TELEDYNE PART NUMBER  
710-0605-001

REVISION HISTORY					
REV	DATE	ORIGINATOR	APPROVED	DCRN	CAD
A	12/20/2016	Project 4792	J. Parrish	1612034	TMM
B	5/12/17	T. McNamara	R. Nichols	1705056	TMM



DIMENSIONS ARE RECOMMENDED FOR USE ON RODGERS RO4003C BOARD MATERIAL, 0.012" THICK, DOUBLE SIDED WITH 1/2 OZ. COPPER. THIS BOARD WILL BE BONDED TO A 0.040" FR4 PLATE.

**EXPORT CONTROL**  
**PROPRIETARY INFORMATION**  
THIS DOCUMENT CONTAINS PROPRIETARY INFORMATION AND, EXCEPT WITH PERMISSION FROM TELEDYNE STORM, SUCH INFORMATION SHALL NOT BE PUBLISHED OR DISCLOSED FOR ANY PURPOSE AND THE DOCUMENT SHALL NOT BE COPIED WHOLE OR IN PART.

UNLESS OTHERWISE SPECIFIED: DIM XX ± DIM XXX ± DIM XXXX ± ANGLES ±°	ENGINEER: <b>T.MCNAMARA</b>	PROJECT No:	<b>TELEDYNE STORM MICROWAVE</b> Everywhere you look <a href="http://www.teledynestorm.com">www.teledynestorm.com</a>	10221 WERCH DRIVE Woodridge, IL 60517
	QUALITY:	TITLE: <b>TEST PC BOARD, 2X 8 POSITION SMPM &amp; SMA-SJ EDGE LAUNCH CONNECTOR</b>		
ALL DIMENSIONS ARE IN INCHES. REMOVE ALL BURRS, BREAK CORNERS & SHARP EDGES .003" MAX.	MATERIAL:	DRAWING SIZE: <b>B</b> SCALE:		SHEET 1 of 1
PART OR ASSY WEIGHT: N/A	FINISH:	DRAWING NUMBER: <b>710-0605</b>		REVISION LEVEL: <b>B</b>